



**NIGERIA
POULTRY
& LIVESTOCK
EXPO**



www.nipoliexpo.com



THEME

Innovate
invest
integrate

*The Future of Poultry and
Livestock in Nigeria*

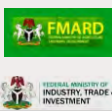


28 29 30
April, 2026

NIPOLI Village NCRI, Moor Plantation,
Apata, Ibadan, Nigeria.



THE BACKING OF PARTNERS



NIPOLI EXPO 2025 HIGHLIGHTS

- 01**  **BUYER - SELLER MEETINGS**
B2B, B2G, B2C AND B2T NETWORKING OPPORTUNITIES
- 02**  **TRENDING TECH SHOWCASE**
DISPLAYING ADVANCE AND TRENDING TECH FOR PRODUCTIVE INNOVATION
- 03**  **EDUCATIVE SYMPOSIUM**
THAT COVERS 360 DEGREE OF REGIONAL LIVESTOCK INDUSTRY
- 04**  **FOCUS POINT**
RIGHT TIME, RIGHT PRODUCTS, RIGHT EXPERIENCE
FOCUSED ON CORE PROCESS INDUSTRY

NIPOLI EXPO FACTS & FIGURES

-  **100+**
EXHIBITORS
-  **500**
BUYER-SELLER MEETINGS ORGANIZED
-  **2400**
SQM. EXHIBITION AREA
-  **5000+**
TRADE VISITORS
-  **EXHIBITORS FROM 15 COUNTRIES**
-  **MAJOR BUYER FROM 10 STATES OF NIGERIA**

Welcome to the Mega 8th Nigeria Poultry and Livestock Expo

NIPOLI EXPO 2026 The Exclusive Sourcing Hub for Poultry, Piggery, Dairy, and Aquaculture in Nigeria.

NIPOLI EXPO 2026 is the largest and most influential livestock exhibition in Nigeria, dedicated to advancing innovation, investment, and sustainable growth across the entire livestock value chain. Now in its 8th edition, the expo has become a vital business-to-business platform connecting local and international players in the poultry, piggery, dairy, and aquaculture industries.

Whether you are a farmer, agribusiness entrepreneur, equipment supplier, animal health expert, feed producer, or investor, NIPOLI EXPO 2026 offers a unique opportunity to:

- » Source modern technologies and equipment from global and local manufacturers.
- » Network with key industry stakeholders, policymakers, and development partners.
- » Discover the latest trends in livestock nutrition, health, genetics, and production systems.
- » Participate in technical workshops, training, and live demonstrations tailored to industry needs.

What Makes NIPOLI EXPO 2026 Unmissable?

- » Over 150 Global and Local Exhibitors
- » 5,000+ Trade Visitors and Industry Professionals
- » Live Demonstrations, Workshops & Masterclasses
- » Tech Pavilions for Feed, Animal Health, Equipment & Smart Farming
- » Investment Forums and Buyer-Supplier Matchmaking
- » Policy Roundtables and Government Engagement

C O - L O C A T E D

CO-LOCATED EXPO

01

NIGERIA MEAT TECH EXPO 2026

The Nigeria Meat Tech Expo (NIMEATECH 2026) is the country's premier specialized exhibition dedicated exclusively to the meat production, processing, and technology sector.



**NIGERIA
MEAT TECH
EXPO**



**Nigeria
Cold Chain
Expo**

CLEXPO 2026

The Nigeria Agro-Logistic and Cold-Value Chain EXPO 2026 is set to be a pivotal event in the agricultural sector, focusing on the integration of logistics and cold chain management to enhance the value of agricultural products.

02

03

NFTECH EXPO 2026

The Nigeria Feedmill Tech Expo, NFTECH EXPO 2026 is a key event highlighting advancements in feed milling technology. It provides a platform for industry professionals to exchange ideas, explore innovative solutions, and discuss the latest trends.



**Nigeria
Feedmill
TECH EXPO**

C O - L O C A T E D

CO-LOCATED EXPO

04

NDTECH EXPO 2026

The Nigeria Dairy Tech Expo, known as NDTECH EXPO 2026, is set to showcase the latest advancements in the dairy industry. This event will bring together industry professionals, innovators, and stakeholders to explore cutting-edge technologies and practices that can enhance dairy production and sustainability in Nigeria.



NABE 2026

The Nigeria Aquatech and Blue Economy Expo, NABE 2026, is set to showcase innovations and advancements in water technology and sustainable practices within the blue economy sector. This event aims to bring together industry leaders, policymakers, and stakeholders to discuss challenges and opportunities in water management and marine resources.

05

06

NAHN EXPO 2026

The Nigeria Animal Health and Nutrition Expo (NAHN) 2026 is set to be a significant event in the agricultural calendar, focusing on advancements in animal health and nutrition. This expo will bring together industry experts, researchers, and stakeholders to discuss innovative practices and solutions that can enhance livestock productivity and welfare.



C O - L O C A T E D

EXHIBITOR PROFILE



- › Livestock Feed Manufactures
- › Veterinary Products & Services
- › Animal Biotechnology / Bio Security
- › Animal Nutrition / Health Products
- › Poultry Equipment
- › Poultry & Cattle Feed Machinery
- › Poultry & Other Animal Breeders
- › Dairy Farming Equipment



- › Dairy Technology
- › Dairy Products Traders
- › Animal Laboratory / Instruments
- › Pharmaceutical Products
- › Cattle Farming
- › Feed Additives
- › Meat & Meat Products
- › Egg Trays
- › Packaging Equipment & Materials



- › Dealers Distributors
- › Herbal Animal Health Products
- › IT / Software Technology
- › Incubation Systems
- › Fisheries & Aquaculture
- › Government Agencies
- › Trade Organizations
- › Educational Institutions
- › NGOS etc.

DELEGATE/VISITOR PROFILE



- › Trade industry & Trade Media
- › Investors & Entrepreneurs
- › Consultants
- › Scientists
- › Technologists
- › Transport & Logistic Experts
- › Dealers & Distributors



- › Agricultural Research Institutes
- › Farm Contractors
- › Farmers
- › Educationist & Students
- › Bankers
- › Govt Authorities
- › Importers & Exporters

PARTICIPATING COUNTRIES

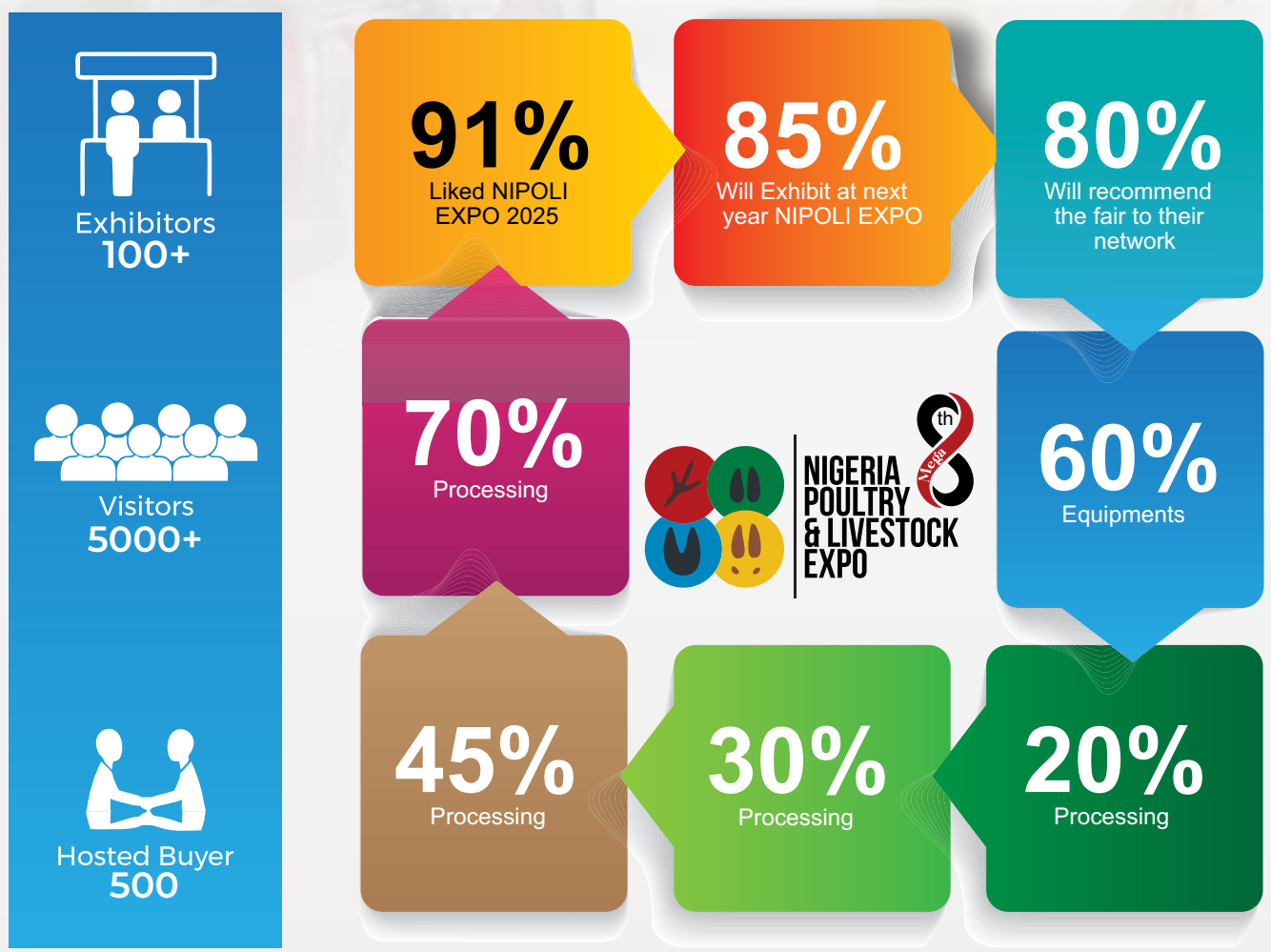


C O - L O C A T E D

NIPOLI EXPO 2025 PARTICIPANT ANALYSIS



EXHIBITOR OPINION



GLANCE AT NIPOLI EXPO 2025



NIPOLI EXPO 2026

STALL PARTICIPATION COST

Shell Scheme Stand Construction \$2700 9 m² (3m x 3m)+ VAT

Package includes:

- Panel Branding (6 or 9 panels)
- Branded Fascia with company name and logo
- Exhibitor Details Insertion (Expo Catalogue and Website)
- Exhibition Desk and 4 chairs
- 2 spot lights
- Electric supply up to 1 HP (single phase)
- Waste Basket
- General Cleaning



Shell Scheme Stand Construction \$5400 18 m² (6m x 3m)+ VAT

Package includes:

- Panel Branding (9 or 12 panels)
- Branded Fascia with company name and logo
- Exhibitor Details Insertion (Expo Catalogue and Website)
- 2 Exhibition Desk and 8 chairs
- 4 spot lights
- Electric supply up to 2 HP (single phase)
- 2 Waste Basket
- General Cleaning

Raw Space Only \$3,600 (Minimum Occupying Area 18m²) (6m x 3m)+ VAT

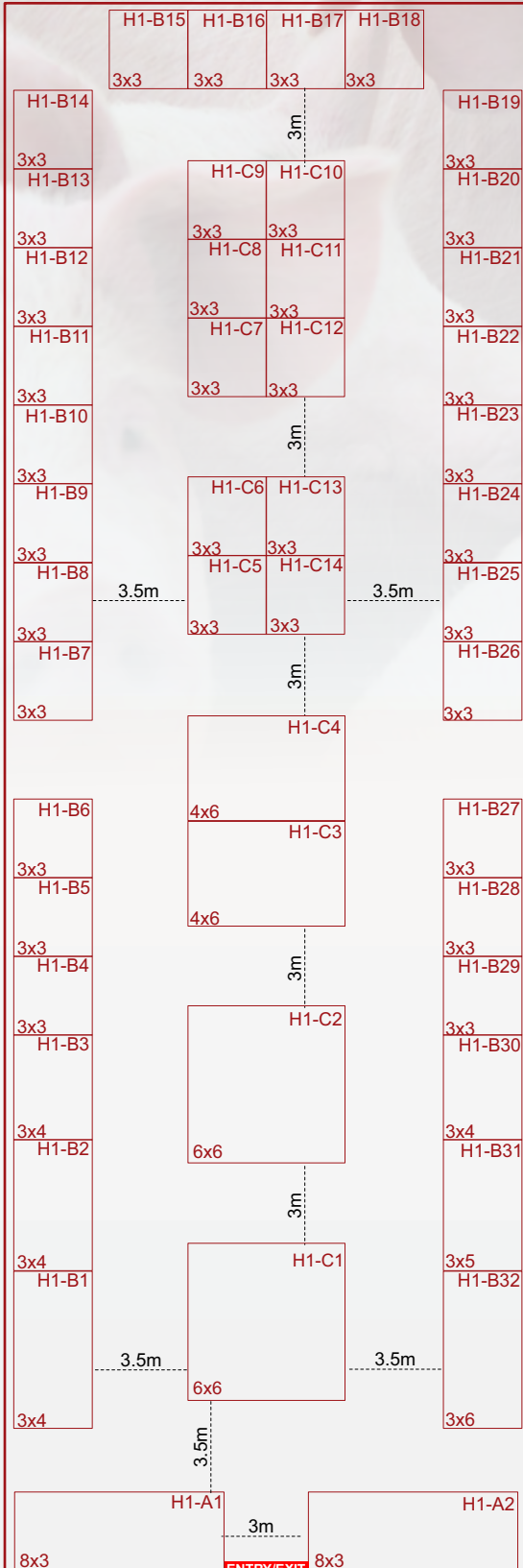
Raw Space includes:

- Floor space without carpet
- Exhibitor Details Insertion (Expo Catalogue and Website)
- Electric supply up to 2 HP (single phase)
- 2 Waste Basket
- General Cleaning

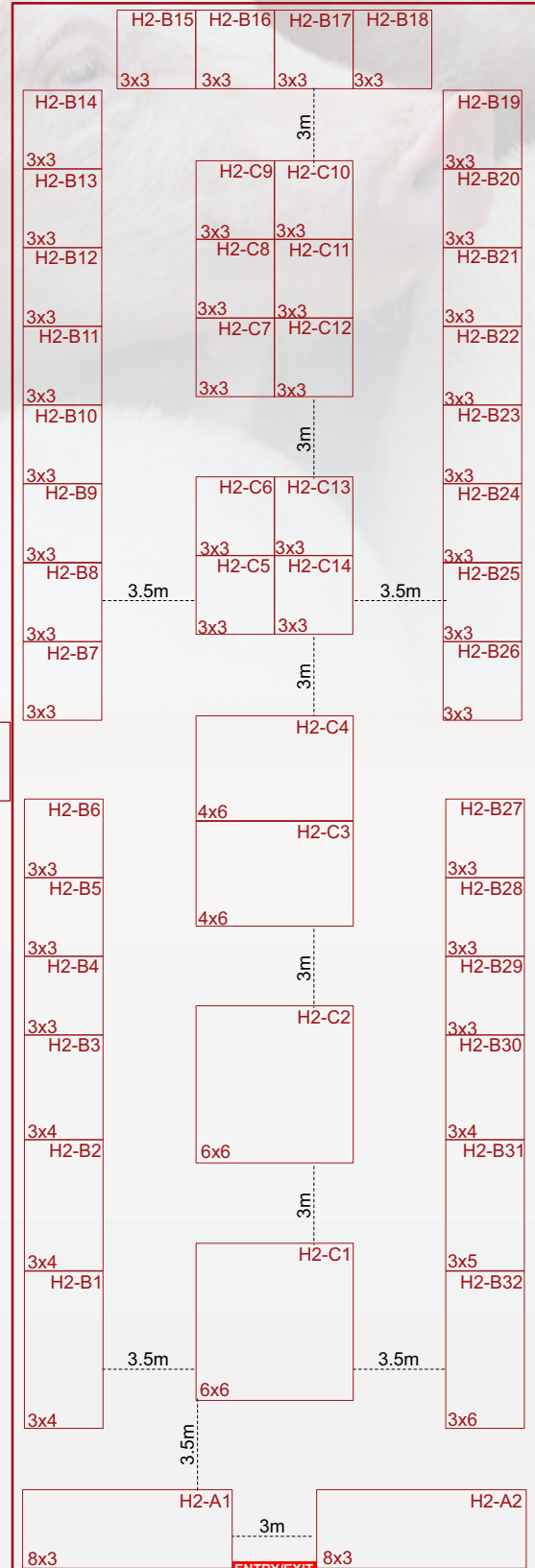


NB: Recommend for customised exhibition booth

HALL 1



HALL 2



REGISTRATION

8x3

BOOTH INCLUSIONS

SHELL SCHEME booth (Minimum 9 sqm)

Rear and Sidewalls, Carpet, 1 Table, 2 Chairs, Fascia Panel with Company Name, Electricity Connection Single Phase 220V and Consumption, 1 Plug Socket & Spot Light, Waste Basket, Company details in Expo Catalogue

See You @ NIPOLI EXPO 2026!

Join industry leaders, innovators, and major brands under one roof at Nigeria's premier poultry, dairy, piggery and aquaculture exhibition. Discover new opportunities, forge valuable partnerships, and showcase your products to thousands of targeted buyers and decision-makers.

Don't miss your chance to be part of the Major Brands Pavilion and make your mark on West Africa's dynamic market.

MAJOR BRANDS @ NIPOLI EXPO 2025



ORGANIZED BY



FOR EXHIBITION & SPONSORSHIP ENQUIRIES

For Exhibition & Sponsorship Enquiries
M: +91 98671 71810
E: nigeriapoultryexpo@gmail.com

For Visiting/Delegate Enquiry
M: +23480 31919662
E: marketing@nipoliexpo.com

For Booth Fabrication/Logistics/Hotel Booking
M: +23480 31919662
E: logistics@nipoliexpo.com